



# GALK1 Polyclonal Antibody

<b>Catalog No</b>	YP-Ab-03888
<b>Isotype</b>	IgG
<b>Reactivity</b>	Human;Mouse;Rat
<b>Applications</b>	WB;IHC;IF;ELISA
<b>Gene Name</b>	GALK1
<b>Protein Name</b>	Galactokinase
<b>Immunogen</b>	The antiserum was produced against synthesized peptide derived from human GALK1. AA range:1-50
<b>Specificity</b>	GALK1 Polyclonal Antibody detects endogenous levels of GALK1 protein.
<b>Formulation</b>	Liquid in PBS containing 50% glycerol, 0.5% BSA and 0.02% sodium azide.
<b>Source</b>	Polyclonal, Rabbit,IgG
<b>Purification</b>	The antibody was affinity-purified from rabbit antiserum by affinity-chromatography using epitope-specific immunogen.
<b>Dilution</b>	Western Blot: 1/500 - 1/2000. Immunohistochemistry: 1/100 - 1/300. Immunofluorescence: 1/200 - 1/1000. ELISA: 1/10000. Not yet tested in other applications.
<b>Concentration</b>	1 mg/ml
<b>Purity</b>	≥90%
<b>Storage Stability</b>	-20°C/1 year
<b>Synonyms</b>	GALK1; GALK; Galactokinase; Galactose kinase
<b>Observed Band</b>	45kD
<b>Cell Pathway</b>	cytoplasm,cytosol,membrane,extracellular exosome,
<b>Tissue Specificity</b>	Blood,Brain,Fetal brain cortex,Lung,
<b>Function</b>	catalytic activity:ATP + D-galactose = ADP + alpha-D-galactose 1-phosphate.,disease:Defects in GALK1 are the cause of galactosemia II [MIM:230200]. It is an autosomal recessive deficiency characterized by congenital cataracts during infancy and presenile cataracts in the adult population. The cataracts are secondary to accumulation of galactitol in the lenses.,function:Major enzyme for galactose metabolism.,pathway:Carbohydrate metabolism; galactose metabolism.,similarity:Belongs to the GHMP kinase family.,similarity:Belongs to the GHMP kinase family. Galk subfamily.,
<b>Background</b>	Galactokinase is a major enzyme for the metabolism of galactose and its deficiency causes congenital cataracts during infancy and presenile cataracts in the adult population. [provided by RefSeq, Jul 2008],



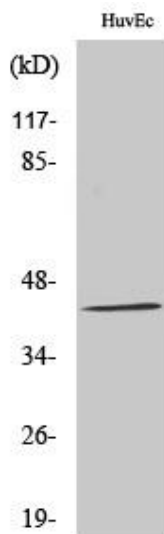
**matters needing attention**

Avoid repeated freezing and thawing!

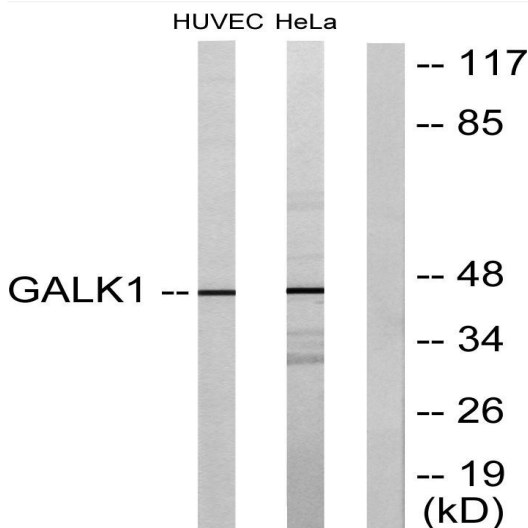
**Usage suggestions**

This product can be used in immunological reaction related experiments. For more information, please consult technical personnel.

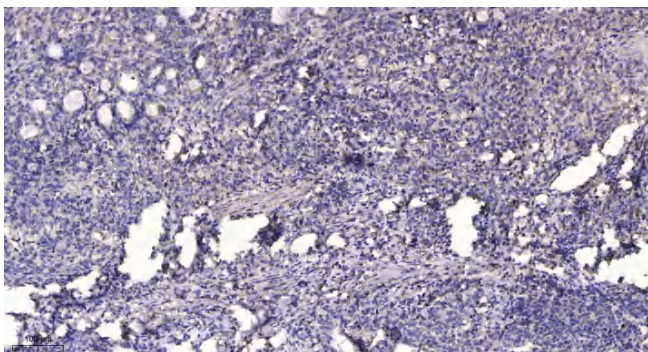
## Products Images



Western Blot analysis of various cells using GALK1 Polyclonal Antibody diluted at 1:1000



Western blot analysis of lysates from HUVEC and HeLa cells, using GALK1 Antibody. The lane on the right is blocked with the synthesized peptide.



Immunohistochemical analysis of paraffin-embedded human Gastric adenocarcinoma. 1, Antibody was diluted at 1:200(4° overnight). 2, Tris-EDTA,pH9.0 was used for antigen retrieval. 3,Secondary antibody was diluted at 1:200(room temperature, 45min).